

Concrete Arch, Deck - Closed Spandrel Bridges



HISTORIC BRIDGE #01345

STATE HIGHWAY 7

GARLAND COUNTY

CONCRETE ARCH, DECK—CLOSED SPANDREL

CROSSES - SORRELLS CREEK

DATE OF CONSTRUCTION - 1930

BUILDER - WEST ARKANSAS CONSTRUCTION COMPANY, MCALISTER, OK

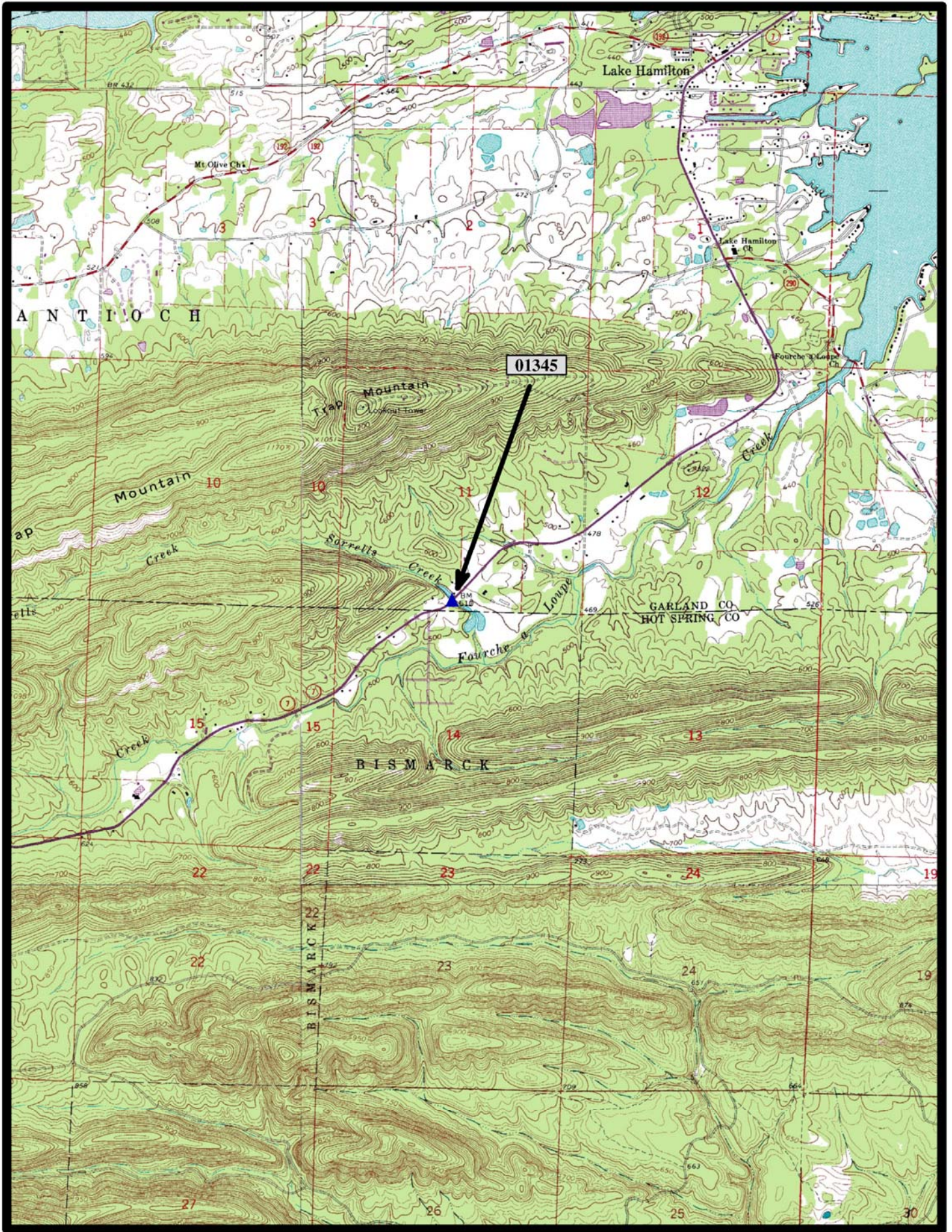
HISTORIC BRIDGE INVENTORY DATE - 2005

SHPO NUMBER - GA0248

HAER NUMBER -

DATE LISTED ON NATIONAL REGISTER -

LAT./LONG. 34:23:31.62, -93:06:51.48



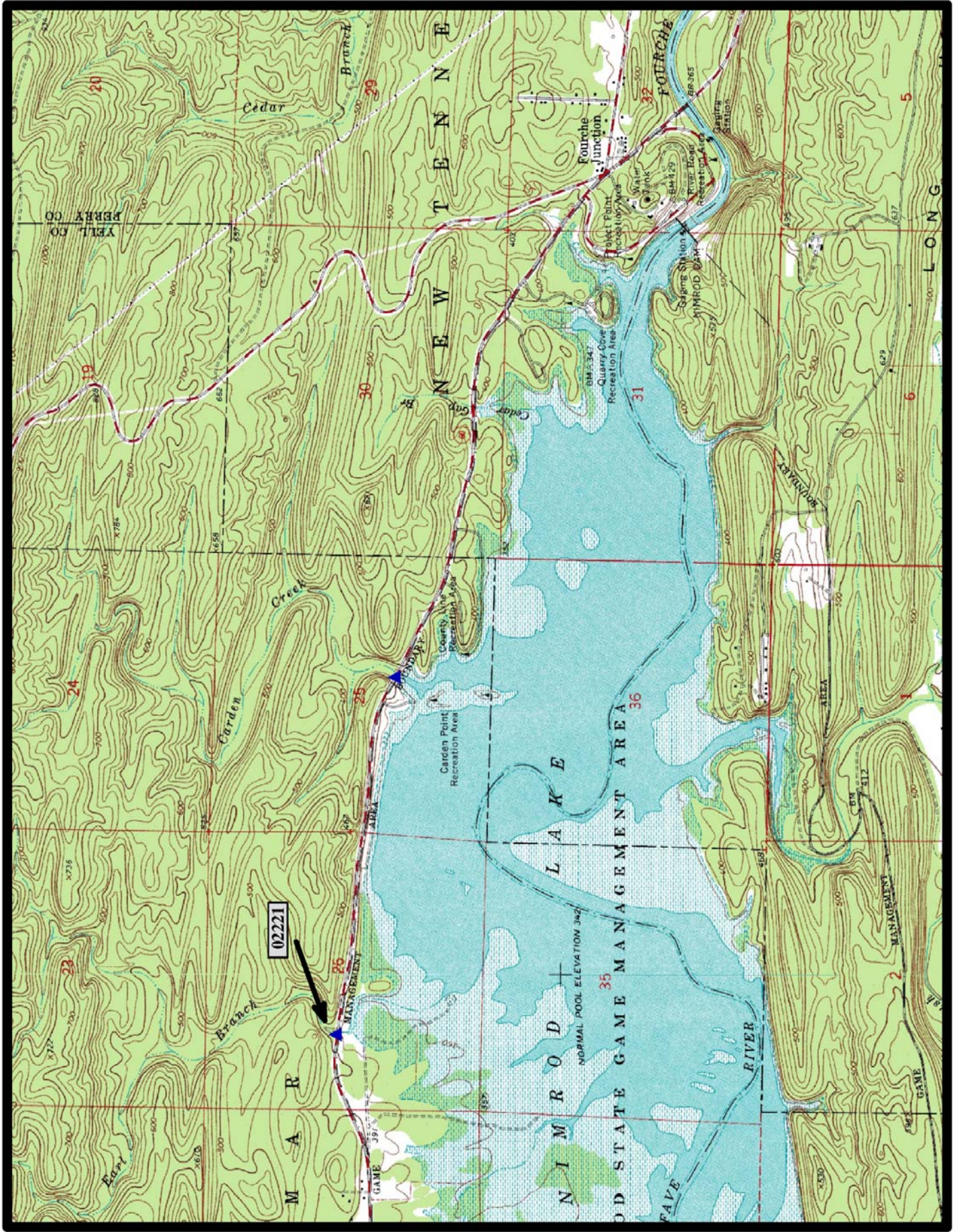
Hot Springs South 7.5 min. Quad



HISTORIC BRIDGE #02221
STATE HIGHWAY 60
YELL COUNTY
CONCRETE ARCH, DECK—CLOSED SPANDREL
CROSSES - EARL BRANCH
DATE OF CONSTRUCTION – 1942
BUILDER - US CORPS OF ENGINEERS
HISTORIC BRIDGE INVENTORY DATE - 2000
SHPO NUMBER - YE0118
HAER NUMBER -
DATE LISTED ON NATIONAL REGISTER -
LAT./LONG. 34:58:12.63, -93:12:43.86



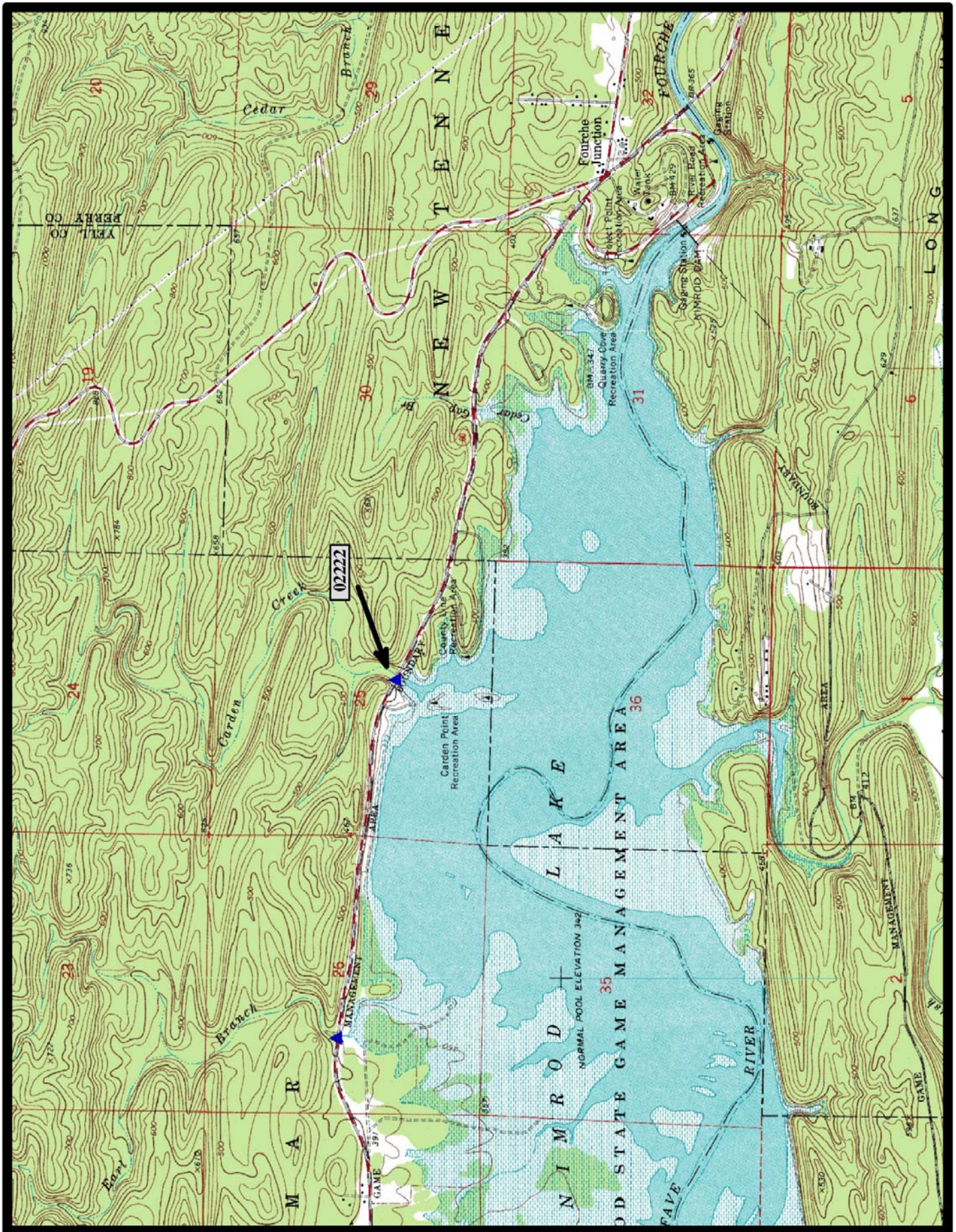
North



Nimrod Dam 7.5 min. Quad



HISTORIC BRIDGE #02222
STATE HIGHWAY 60
YELL COUNTY
CONCRETE ARCH, DECK—CLOSED SPANDREL
CROSSES - CARTER CREEK
DATE OF CONSTRUCTION – 1942
BUILDER - US CORPS OF ENGINEERS
HISTORIC BRIDGE INVENTORY DATE - 2000
SHPO NUMBER - YE0119
HAER NUMBER -
DATE LISTED ON NATIONAL REGISTER -
LAT./LONG. 34:58:01.58, -93:11:20.91

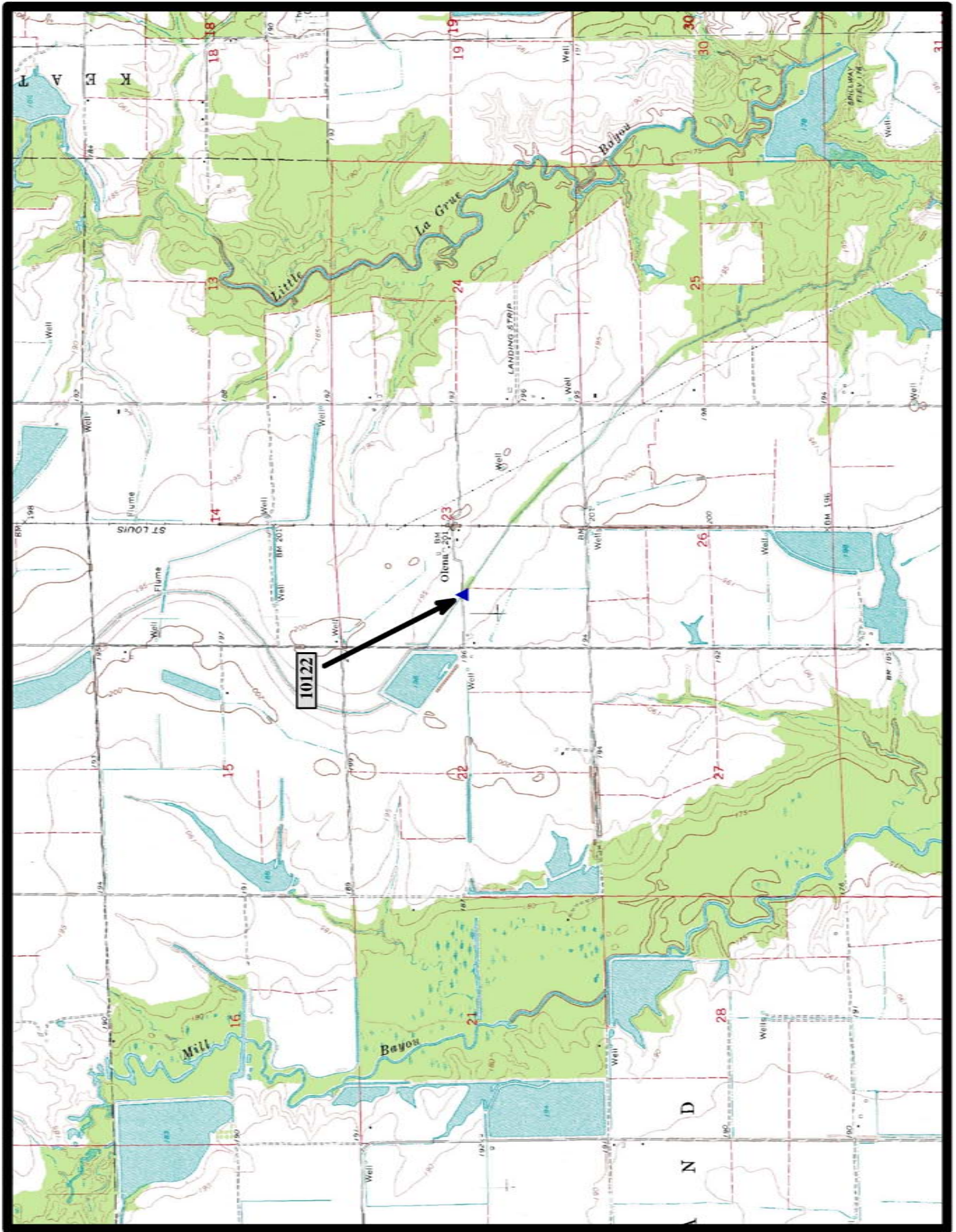


North

Nimrod Dam 7.5 min. Quad



HISTORIC BRIDGE #10122
COUNTY ROAD 402
ARKANSAS COUNTY
CONCRETE ARCH, DECK—CLOSED SPANDREL
CROSSES - DRAINAGE DITCH
DATE OF CONSTRUCTION – 1936
BUILDER - UNKNOWN
HISTORIC BRIDGE INVENTORY DATE - 2005
SHPO NUMBER - AR0103
HAER NUMBER -
DATE LISTED ON NATIONAL REGISTER -
LAT./LONG. 34:20:07.55, -91:24:55.15



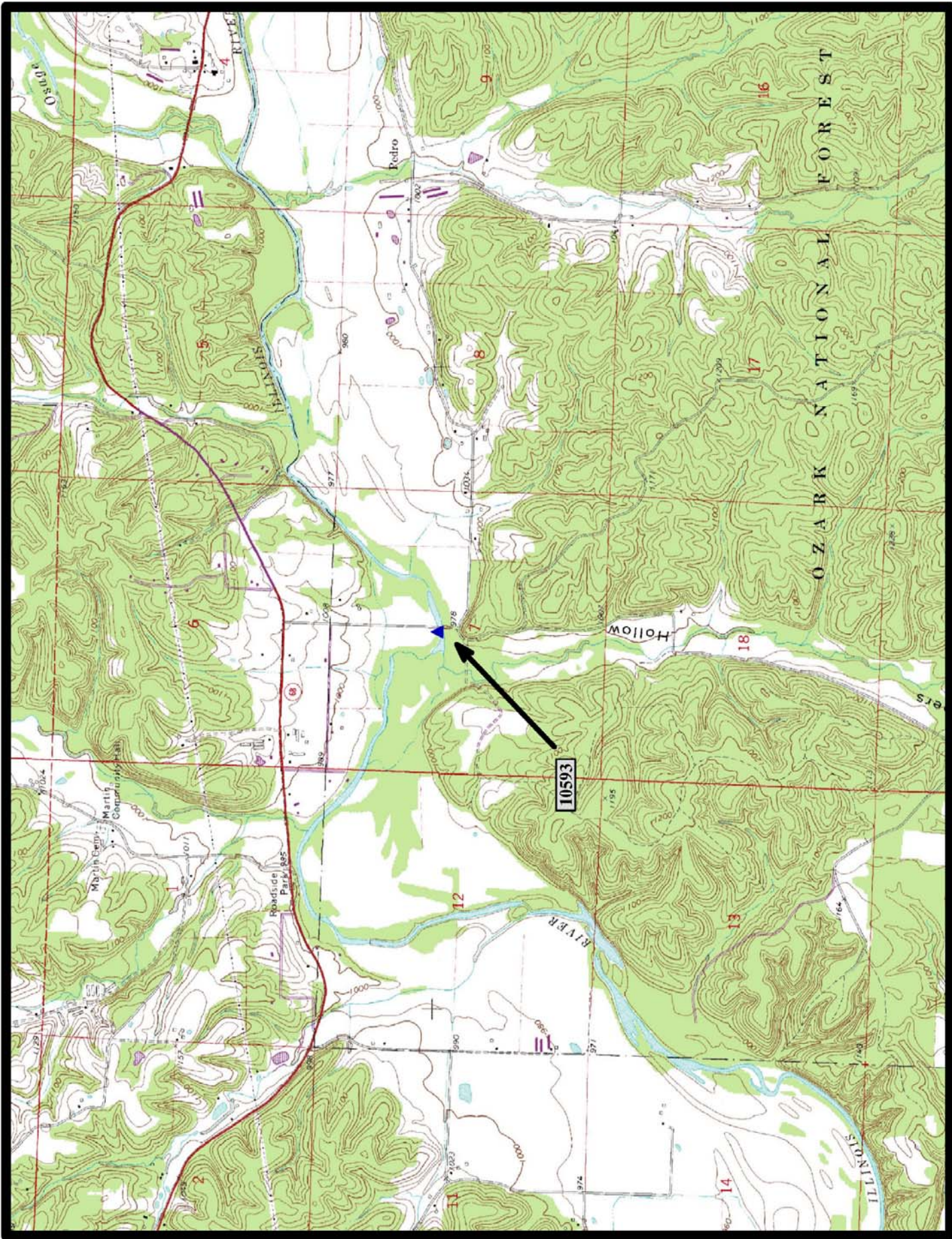
DeWitt SW 7.5 min. Quad



North



HISTORIC BRIDGE #10593
COUNTY ROAD 3
BENTON COUNTY
CONCRETE ARCH, DECK—CLOSED SPANDREL
CROSSES - ILLINOIS RIVER
DATE OF CONSTRUCTION - 1922
BUILDER - LUTEN BRIDGE COMPANY, KNOXVILLE, TN
HISTORIC BRIDGE INVENTORY DATE - 1987
SHPO NUMBER - BE3032
HAER NUMBER - AR-28
DATE LISTED ON NATIONAL REGISTER - 1/28/1988
LAT./LONG. 36:09:59.89, -94:26:01.69



←
North

Gallatin 7.5 min. Quad